

S CRIMP 137 EVO R

MAINTENANCE WORKSHOP
VERTICAL BENCHTOP

KEY FEATURES

Ergonomically positioned adjustable head

Axis of the head situated perpendicular to the operator

Compact

Optional quick change tool for dies

Range of standard dies available



TECHNICAL SPECIFICATIONS

CAPACITY*	MOTOR
2wb: 1¼" max.	1.5 kW (110V)
4ws: 1¼" max.	2.2 kW (230V)
CRIMP RANGE	VOLTAGES
6 to 56 mm (0.517 - 2.205")	110 V, 1Ph, 60 Hz
CRIMP FORCE	220/240 V, 1 Ph, 50 Hz
137 t	380/415V, 3 Ph + N, 50 Hz
OPENING WITH DIES	+12/24
+28 mm (+1.102")	Other voltages available on request
COMPLETE OPENING	DIMENSIONS
100 mm (3.937")	360 x 530 x 620 mm
MASTER DIE LENGTH	(14 x 21 x 25")
75 mm (2.953")	NET WEIGHT
STANDARD DIES	89 kg (196 lb)
15, 18, 21, 24, 27, 30, 33, 36, 39, 42, 45, 48, 51	GROSS WEIGHT
NOISE LEVEL	85 kg (187 lb)
70 dB A	

*Indicative capacities depending on hose and fitting type

OPTIONAL



Maintenance Kit



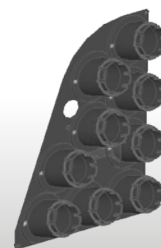
Die Storage Panel



Die Storage Table



Quick Change Gun



Die Storage Panel EVO R



Aluminium Quick Change Gun