

H CRIMP 80

FIELD SERVICE & MOBILE WORKSHOP
HAND PUMP, PORTABLE



KEY FEATURES

- Compact
- Lightweight
- Easy to use
- Balanced design
- Dual stage pump

TECHNICAL SPECIFICATIONS

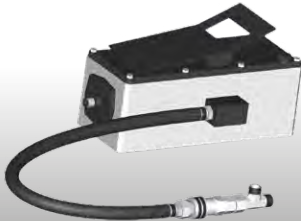
CAPACITY*	DIMENSIONS
2wb: 1" max.	330 x 250 x 400 mm
4ws: 1/2" max.	(13 x 10 x 16")
CRIMP RANGE	PACKAGING
4 - 43 mm (0.157 - 1.693")	800 x 600 x 830 mm
CRIMP FORCE	(31 x 24 x 33")
80 t	NET WEIGHT
OPENING WITH DIES	28 kg (62 lb)
+20 mm (+0.787")	GROSS WEIGHT
COMPLETE OPENING	41 kg (90 lb)
59 mm (2.323")	TECHNICAL FEATURES
MASTER DIE LENGTH	Hand pump: 5000 psi
56 mm (2.205")	(double speed)
STANDARD DIES	
15, 18, 21, 24, 27, 30, 39	

*Indicative capacities depending on hose and fitting type

OPTIONAL



Maintenance Kits



Hydro-pneumatic
Pump

H CRIMP 110

FIELD SERVICE & MOBILE WORKSHOP
HAND PUMP, PORTABLE

KEY FEATURES

- Flexible
- Portable
- Robust (protected narrow head)
- Multi-positioning (with removable plate)



TECHNICAL SPECIFICATIONS

CAPACITY*

2wb: 1" max.

4ws: 1" max.

CRIMP RANGE

4 - 43 mm (0.157 - 1.693")

CRIMP FORCE

110 t

OPENING WITH DIES

+20 mm (+0.787")

COMPLETE OPENING

59 mm (2.323")

MASTER DIE LENGTH

60 mm (2.362")

STANDARD DIES

15, 18, 21, 24, 27, 30

DIMENSIONS

220 x 222 x 240 mm

(7 x 9 x 10")

PACKAGING

800 x 600 x 830 mm

(31 x 24 x 33")

NET WEIGHT

28 kg (62 lb)

WEIGHT (HEAD ONLY)

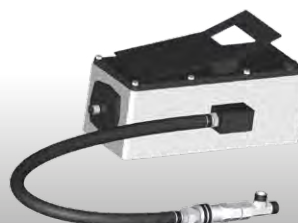
21 kg (46 lbs)

*Indicative capacities depending on hose and fitting type

OPTIONAL



Maintenance Kits

Hydro-pneumatic
Pump

H CRIMP 137

FIELD SERVICE & MOBILE WORKSHOP
HAND PUMP, PORTABLE

KEY FEATURES

High capacity

Narrow head

Audio-visual signal

350 bar technology more robust &
reliable than 700 bar

Large opening



TECHNICAL SPECIFICATIONS

CAPACITY*

2wb: 1¼" max.

4ws: 1¼" max.

CRIMP RANGE

4 - 70 mm (0.157 - 2.756")

CRIMP FORCE

137 t

OPENING WITH DIES

+28 mm (+1.102")

COMPLETE OPENING

100 mm (3.937")

MASTER DIE LENGTH

75 mm (2.362")

STANDARD DIES

15, 18, 21, 24, 27, 30, 33, 36,
39, 42, 45, 48, 51
and Refrifast dies 14, 18, 21

DIMENSIONS

480 x 250 x 340 mm
(19 x 10 x 13")

PACKAGING

800 x 600 x 830 mm
(31 x 24 x 33")

NET WEIGHT

55 kg (121 lb)

GROSS WEIGHT

75 kg (165 lb)

*Indicative capacities depending on hose and fitting type

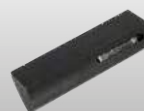
OPTIONAL



Maintenance Kit

Quick Change
GunAluminium Quick
Change Gun

Die Storage Panel

Hydro-pneumatic
Pump

Marking Dies

Die Sets for Brake
& Air Conditioning
Hoses