

S CRIMP 137 EVO R

MAINTENANCE WORKSHOP
VERTICAL BENCHTOP

KEY FEATURES

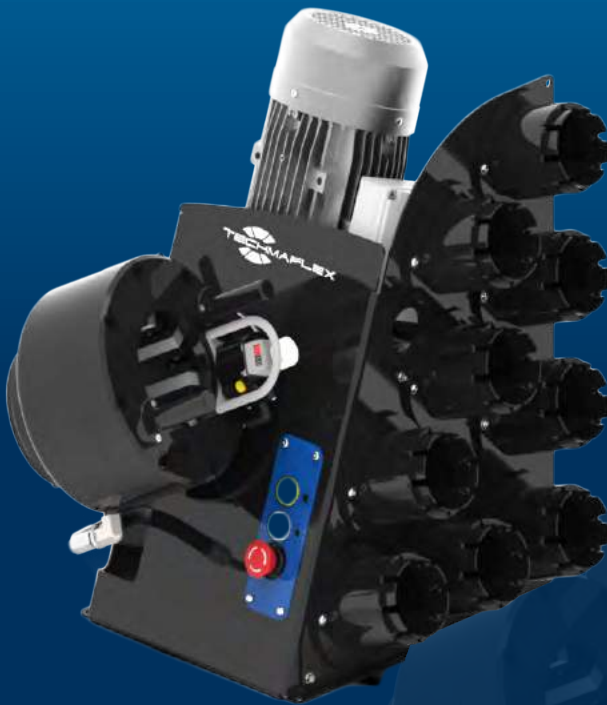
Ergonomically positioned adjustable head

Axis of the head situated perpendicular to the operator

Compact

Optional quick change tool for dies

Range of standard dies available



TECHNICAL SPECIFICATIONS

CAPACITY*	MOTOR
2wb: 1¼" max.	1.5 kW (110V)
4ws: 1¼" max.	2.2 kW (230V)
CRIMP RANGE	VOLTAGES
6 to 56 mm (0.517 - 2.205")	110 V, 1Ph, 60 Hz
CRIMP FORCE	220/240 V, 1 Ph, 50 Hz
137 t	380/415V, 3 Ph + N, 50 Hz
OPENING WITH DIES	+12/24
+28 mm (+1.102")	Other voltages available on request
COMPLETE OPENING	DIMENSIONS
100 mm (3.937")	360 x 530 x 620 mm
MASTER DIE LENGTH	(14 x 21 x 25")
75 mm (2.953")	NET WEIGHT
STANDARD DIES	89 kg (196 lb)
15, 18, 21, 24, 27, 30, 33, 36, 39, 42, 45, 48, 51	GROSS WEIGHT
NOISE LEVEL	85 kg (187 lb)
70 dB A	

*Indicative capacities depending on hose and fitting type

OPTIONAL



Maintenance Kit



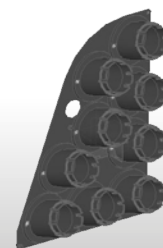
Die Storage Panel



Die Storage Table



Quick Change Gun



Die Storage Panel EVO R



Aluminium Quick Change Gun

S CRIMP 137 EVO

ASSEMBLING FOR FIELD REPAIR
BENCHTOP CRIMP MACHINE



KEY FEATURES

- Crimp force of up to 137 tonnes for hoses up to 1¼"
- Easy to use and robust
- Extensive range of dies to suit crimping of hydraulic hoses
- Easy to set up and maintain
- Fast and reliable
- Digital micrometer
- Model shown equipped with SC control panel

CONTROL OPTIONS AVAILABLE ON REQUEST



TECHNICAL SPECIFICATIONS

CAPACITY*

2wb: 1¼" max.

4ws: 1¼" max.

CRIMP RANGE

4 - 70 mm (0.157 - 2.756")

CRIMP FORCE

137 t

OPENING WITH DIES

+28 mm (+1.102")

COMPLETE OPENING

100 mm (3.937")

MASTER DIE LENGTH

75 mm (2.953")

STANDARD DIES

15, 18, 21, 24, 27, 30, 33, 36, 39, 42, 45, 48, 51

NOISE LEVEL

70 dB A

MOTOR

4.0 kW

VOLTAGES

220/240 V, 3Ph, 50 Hz

380/415 V, 3Ph, 50 Hz

208/240 V, 3Ph, 60 Hz

380/415 V, 3Ph, 60 Hz

Other voltages available on request

DIMENSIONS

765 x 400 x 650 mm

(30 x 16 x 26")

NET WEIGHT

160 kg (353 lb)

*Indicative capacities depending on hose and fitting type

OPTIONAL



Maintenance Kit



Marking Dies



Die Storage Panel



Die Storage Table



Electrical Footswitch



Quick Change Gun



Aluminium Quick Change Gun



Die Sets for Brake & Air Conditioning Hoses



Bluetooth



Die Storage Panel EVO

S CRIMP 240 EVO

PROFESSIONAL WORKSHOP
BENCHTOP



KEY FEATURES

- Crimp force of up to 240 tonnes for hoses up to 2"
- Easy to use and robust
- Radial die movement
- High crimping force
- Extensive range of dies to suit crimping of hydraulic hoses
- Easy set up and maintenance
- Fast and reliable
- Model shown equipped with SCE control panel

CONTROL OPTIONS AVAILABLE ON REQUEST



SC

SCE

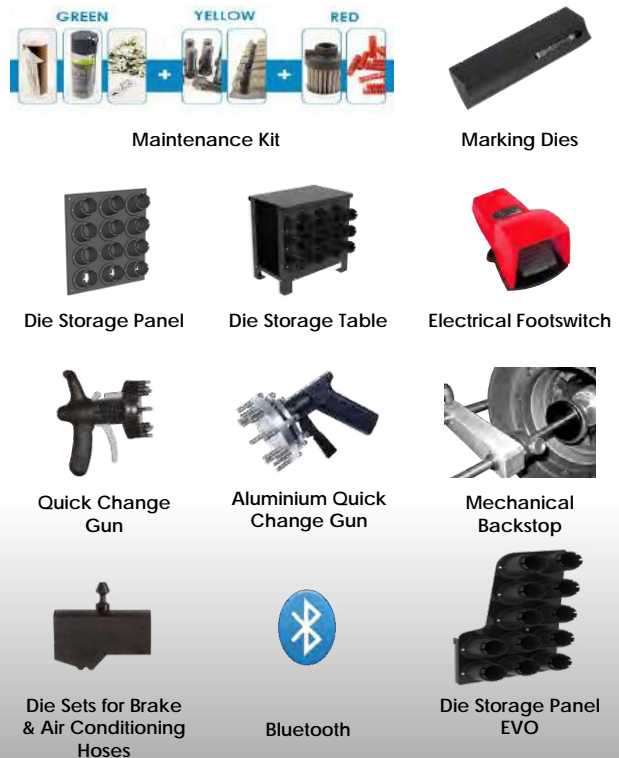
SCS

TECHNICAL SPECIFICATIONS

CAPACITY*	NOISE LEVEL
2wb: 2" max.	<70 dB A
4ws: 2" max.	MOTOR
6ws: 1" max.	4.0 kW
CRIMP RANGE	VOLTAGES
4 - 76 mm (0.157 - 2.992")	220/240 V, 3Ph, 50 Hz
CRIMP FORCE	380/415 V, 3Ph, 50 Hz
240 t	208/240 V, 3Ph, 60 Hz
OPENING WITH DIES	380/415 V, 3Ph, 60 Hz
+38 mm (+1.496")	Other voltages available on request
COMPLETE OPENING	DIMENSIONS
118 mm (4.645")	765 x 400 x 650 mm
MASTER DIE LENGTH	(30 x 16 x 26")
100 mm (3.937")	NET WEIGHT
STANDARD DIES	165 kg (364 lb)
15, 18, 21, 24, 27, 30, 33, 36, 39, 42, 45, 48, 51, 57, 62, 66, 70	

*Indicative capacities depending on hose and fitting type

OPTIONAL



Maintenance Kit



Marking Dies



Die Storage Panel



Die Storage Table



Electrical Footswitch



Quick Change Gun



Aluminium Quick Change Gun



Mechanical Backstop



Die Sets for Brake & Air Conditioning Hoses



Bluetooth



Die Storage Panel EVO

S CRIMP 350 EVO / S CRIMP 350 L

FULL SERVICE WORKSHOP
BENCHTOP; VERY HIGH CRIMP FORCE

KEY FEATURES

Crimp force of up to 350 tonnes for hoses up to 3"

Easy to use and robust

Automatic maintenance alerts

Groove for 90° long drop fittings

Also available as S CRIMP 350 L with 4.0 kW motor

Model shown equipped with SCS control panel



CONTROL OPTIONS AVAILABLE ON REQUEST



TECHNICAL SPECIFICATIONS

CAPACITY*

2wb: 3" max.
Textile / Suction Hose: 4" max.
4ws: 2" max.
6ws: 2" max.

CRIMP RANGE

4 - 130 mm (0.157 - 5.118")

CRIMP FORCE

350 t

OPENING WITH DIES

+54 mm (+2.125")

COMPLETE OPENING

180 mm (7.086")

MASTER DIE LENGTH

115 mm (4.523")

STANDARD DIES

15, 18, 21, 24, 27, 30, 33, 36, 39, 42, 45, 48, 51, 57, 62, 66, 70, 73, 76

NOISE LEVEL

<70 dB A

MOTOR

5.5 kW / 4 kW

VOLTAGES

220/240 V, 3Ph, 50 Hz
380/415 V, 3Ph, 50 Hz
208/240 V, 3Ph, 60 Hz
380/415 V, 3Ph, 60 Hz

DIMENSIONS

765 x 400 x 750 mm
(30 x 16 x 30")

NET WEIGHT

262 kg (578 lb)

TECHNICAL FEATURES

- Automatic maintenance alerts
- Cylinder protection against dust - durable design
- Also available as S CRIMP 350 EVO L with 4.0 kW Motor

*Indicative capacities depending on hose and fitting type

OPTIONAL



Maintenance Kit



Marking Dies



Die Storage Panel



Die Storage Table



Electrical Footswitch



Quick Change Gun



Aluminium Quick Change Gun



Mechanical Backstop



Die Sets for Brake & Air Conditioning Hoses



Bluetooth



Die Storage Panel EVO

S CRIMP 420 EVO

ASSEMBLING FOR FIELD REPAIR
BENCHTOP CRIMP MACHINE



KEY FEATURES

- High crimping force of 420 tonnes
- Robust design for transport and operation in harsh environments
- Protected cylinders for trouble-free operation in high dust environments
- Large opening suitable for large bore hoses
- Easy maintenance due to foam pads and dust collector
- Model shown equipped with SC control panel

CONTROL OPTIONS AVAILABLE ON REQUEST



TECHNICAL SPECIFICATIONS

CAPACITY*	NOISE LEVEL
6ws: 3" max.	<70 dB A
Industrial: 4" max.	MOTOR
CRIMP RANGE	5.5 kW
4 - 130 mm (0.157 - 5.118")	VOLTAGES
CRIMP FORCE	220/240 V, 3Ph, 50 Hz
420 t	380/415 V, 3Ph, 50 Hz
OPENING WITH DIES	208/240 V, 3Ph, 60 Hz
+48 mm (+1.9 inch)	380/415 V, 3Ph, 60 Hz
COMPLETE OPENING	DIMENSIONS
178 mm (7.0 inch)	765 x 500 x 800 mm
MASTER DIE LENGTH	(30 x 20 x 32")
120 mm (4.724 inch)	PACKAGING
STANDARD DIES	745 x 1150 x 945 mm
15, 18, 21, 24, 27, 30, 33, 36, 39, 42, 45, 48, 51, 57, 62, 66, 70, 73, 76	(29 x 45 x 37")
	NET WEIGHT
	395 kg (871 lb)

*Indicative capacities depending on hose and fitting type

OPTIONAL

- Maintenance Kit
- Marking Dies
- Die Storage Panel
- Die Storage Table
- Electrical Footswitch
- Quick Change Gun
- Aluminium Quick Change Gun
- Die Sets for Brake & Air Conditioning Hoses
- Bluetooth
- Die Storage Panel EVO

S CRIMP 450

ASSEMBLING FOR FIELD REPAIR BENCHTOP CRIMP MACHINE



KEY FEATURES

- High crimp force (450 tonnes)
- Large opening
- Wide family of dies for industrial hoses
- Long master dies
- Robust - designed for harsh environments
- Low noise level
- Easy die set-up with ergonomic gun
- Metallic guard for the set stop

TECHNICAL SPECIFICATIONS

CAPACITY*

6ws: 3" max.
Industrial: 4" max.

CRIMP RANGE

4 - 130 mm (0.157 - 5.118")

CRIMP FORCE

450 t

OPENING WITH DIES

+70 mm (+2.755")

COMPLETE OPENING

197 mm (7.755")

MASTER DIE LENGTH

140 mm (5.512")

STANDARD DIES

15, 18, 21, 24, 27, 30, 33, 36,
39, 42, 45, 48, 51, 57, 62,
66, 70, 73, 76

NOISE LEVEL

<65 dB A

MOTOR

5.5 kW

VOLTAGES

220/240 V, 3Ph, 50 Hz
380/415 V, 3Ph, 50 Hz
208/240 V, 3Ph, 60 Hz
380/415 V, 3Ph, 60 Hz

DIMENSIONS

830 x 775 x 1450 mm
(33 x 31 x 57")

PACKAGING

1120 x 1020 x 1770 mm
(44 x 40 x 70")

NET WEIGHT

720 kg (1587 lb)

*Indicative capacities depending on hose and fitting type

OPTIONAL



Die Storage Panel



Die Storage Table



Quick Change Gun



Marking Dies



Aluminium Quick Change Gun



Die Sets for Brake & Air Conditioning Hoses



Electrical Footswitch