



Hydraulic PUNCHES

20 & 35 Ton

HYDRAULIC TOOLS

- Punch smooth, precise holes in seconds; much faster than drilling.
- Fully portable for construction, maintenance and service applications, or can be mounted on a workbench for production jobs. Has carrying handle for precise locating.
- Rugged, forged steel "C" frame for great strength and durability.
- Dual action, spring loaded stripper holds material during punching operation, strips material from punch on return. Scribe lines on stripper aid in locating the punch (HP 35 only).
- Double Acting prevents binding and speeds retraction (HP20 only).
- The PE172 electric/hydraulic pump is an ideal power source.



HP35

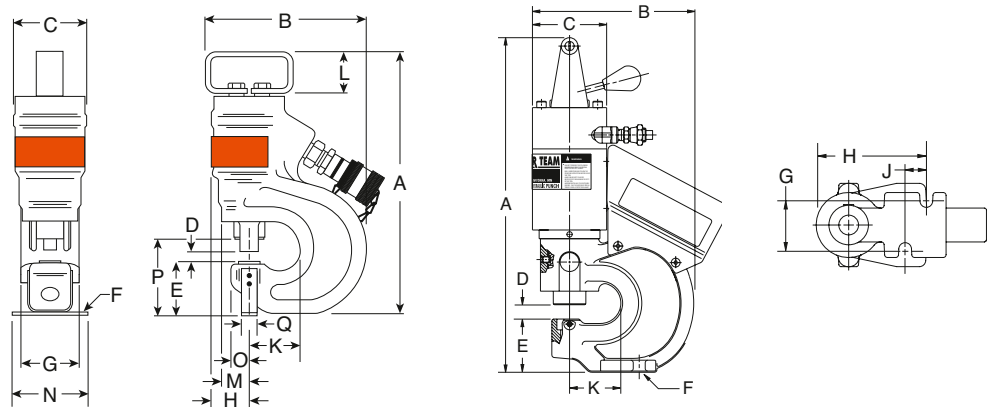
No. HP35 – Punch only, includes metal case and die change tools. Wt., 19 kg.

No. HP35S – Punch with punches and dies. Includes HP35 punch, metal case and 250459 punch/die set. Wt., 20 kg.

No. HP35P – Punch set with pump. Same as HP35SP, but does not include punch/die set. Wt., 39 kg. NOTE: Available in 220 volt, 50 Hz. Order with suffix "-220".

No. HP35SP – Punch set with pump. Includes HP35 punch, PE172 electric/hydraulic pump, 9756 hose, 9798 hose half coupler, 250459 punch/die set, metal case. Wt., 40 kg. NOTE: 220 volt, 50 Hz. Order with suffix "-220".

No. 250459 – Punch/die set for round holes. Includes one each: PD437 11,1 mm punch/die, PD562 14,3 mm punch/die, PD688 17,5 mm punch/die, PD812 20,6 mm punch/die. Wt., 0,7 kg.



Cap.	Order Number	Max. Oper. Press. (bar)	Max. Oil Cap. (cm ³)	Max. Material thickness (mm)	Max. Throat Depth															
					A (mm)	B (mm)	C (mm)	D (mm)	E (mm)	Mtng. Holes F (mm)	G (mm)	H (mm)	J (mm)	K (mm)	L (mm)	M (mm)	N (mm)	O (mm)	P (mm)	Q (mm)
20	HP20	700	64	12,7	419	202	93	16	66	14	54	124	24	57	—	—	—	—	—	
35	HP35	700	75	12,7	349	229	95	14	73	6	76	46	—	71	57	38	89	22	102	19

No. HP20 – Basic punch. Wt., 15 kg.

No. HP20S – Punch frame with cylinder, valve, handle, two coupling nuts, plus five punch and die sets in 6,4 7,9 ,9,5 ,11,1 and 13,5mm dia.Wt. 15,9 kg .

No. HP20SP* – Complete punch set with PE102AR pump (115/230V, 50/60 Hz), HP20HS hand switch, 9682 nipple, two 9792 female couplers and two 9793 male couplers. Also includes two 9758 3 m hoses, 9680 coupling, and same punch and die sets as in HP20S (above). Tool is completely assembled and pre-filled with oil. In storage box. Wt., 15,9 kg.

HP20



Punch Set HP20SP
Includes the PE102AR pump, HP20HS hand switch, hoses, couplers, punch and die sets in sizes 6,4, 7,9 ,9,5 ,11,1 , and 13,5 mm diameter, with storage box Wt.15,9 kg.



PUNCH/DIE SETS FOR HP20 & HP35 HYDRAULIC PUNCHES							TYPICAL 20 TON STYLE TOOLING					
For use with HP20 Hydraulic Punch					For use with HP35 Hyd. Punch		Punch Size (mm)	INCHES		MM		
Punch Size (mm)	Punch Style	Punch No.	Flat Die	Bevel Die No.	Coupling Nut No.	Punch/w Flat Die Set		Punch/w Bevel Die Set	Hole Dia.	Bolt	Hole Dia.	Bolt
6,4	Round	251970		--	252001	--	--	6,4	1/4	#10	6,3	--
7,9		251971	251983	--	252001	PD313	--	8,0	5/16	1/4	7,9	--
9,5		251972	251984	251996	252001	PD375	PD375B	9,5	3/8	5/16	9,5	M8
11,1		251973	251985	251997	252001	PD437	PD437B	11,1	7/16	3/8	11,2	M10
13,5		251974	251986	251998	252001	PD531	PD531B	13,5	17/32	7/16	13,5	M12
14,3		251975	251987	251999	252001	PD562	PD562B	14,3	9/16	1/2	14,3	--
17,5		251976	251988	--	252001	PD688	--	17,5	11/16	5/8	17,5	M16
19,8		251977	251989	--	252002	PD781	--	19,8	25/32	--	19,8	M18
20,6		251978	251990	--	252002	PD812	--	20,6	13/16	3/4	20,6	--
12,7		Square	251979	251991	--	252002	--	--				
13,5	251980		251992	--	252002	--	--					
6,4 x 19	Obround	251981	251993	--	252002	--	--					
9,5 x 19		251982	251994	--	252002	--	--					
			251995									



HP20FS



HP20HS

252000

ACCESSORIES FOR HP20 HYDRAULIC PUNCH

No. HP20FS – Optional foot switch mounted in foot switch guard. Supplied with 3 m cord and male remote connector. Wt., 0,9 kg.

No. HP20HS – Replacement handswitch. Supplied with 3 m cord and male remote connector. Wt., 0,9 kg.

No. 252000 – Optional coupling nut wrench. Makes punch/die changes easier without “rounding-off” coupling nuts. Wt., 0,3 kg.

TECH DATA

Page 231