



Inflatable Jacks

1-74 Ton

JACKS



The non-skid space-age reinforced inflatable jack is perfect for many applications.

- Uninflated jacks are less than 25mm thick, making lifting tasks in small spaces seem routine.
- Constructed of non-conducting, high quality rubber material with multi-layer aramid fiber reinforcement.
- Samples of jacks are pressure tested to 20 bar and cycle tested (10,000 inflate/deflate cycles at 8 bar).
- The controller, shut-off and air hoses are all equipped with an industrial interchange style quick disconnect air coupler. Female half coupler bodies have a locking collar to help the operator avoid accidentally disconnecting the jack while under load.
- The top and bottom surface of the jack has a skid resistant, interlocking pattern to assist in alignment of two jacks being used together.
- Single jack controller with “dead man” control (part no. 350090) can be used individually or in multiples to regulate the number of jacks desired.
- Heavy attachment handles are provided on the two largest jacks for attachment of a rope or hook to help in positioning the jack.
- Inflation hose system is color-coded (red and yellow) for easy recognition when using more than one jack.
- The jacks can be used at ambient temperatures of -20 °C to + 50 °C

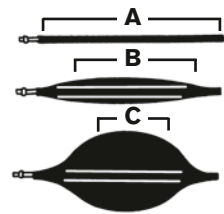
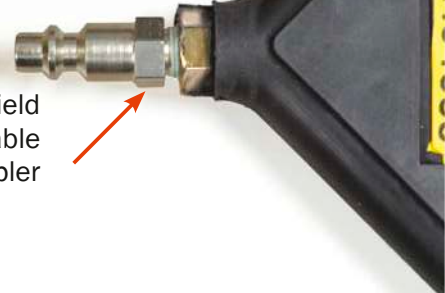
BE SAFE!

- INSPECT BEFORE AND AFTER EACH USE.
- REPLACE IF ANY SIGNS OF DEGRADATION OR WEAR THAT MAY AFFECT SAFETY OR PERFORMANCE.
- KEEP THE PRODUCT CLEAN.
- STORE PROPERLY.



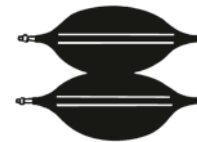
IJ Series Inflatable Air Jacks

Field Replaceable Coupler



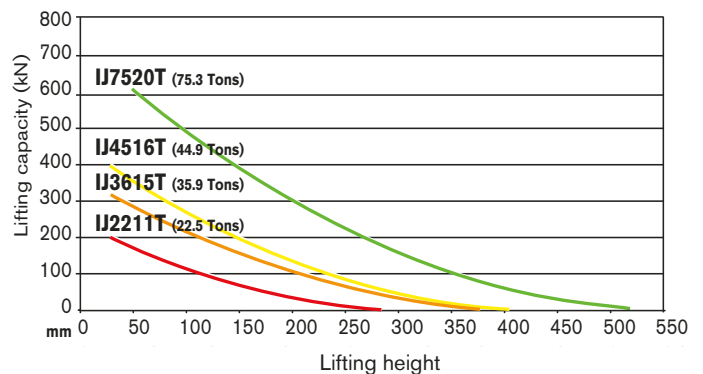
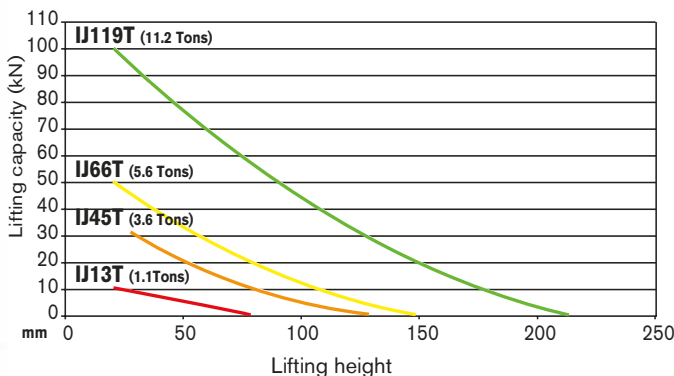
Maximum Effective Lifting Area

All lifting capacities mentioned in the charts are measured at the maximum effective lifting area (A). As the jack is inflated (B), this effective area decreases (C) due to the rounded shape of the jack. Lifting capacity also decreases (see performance chart).

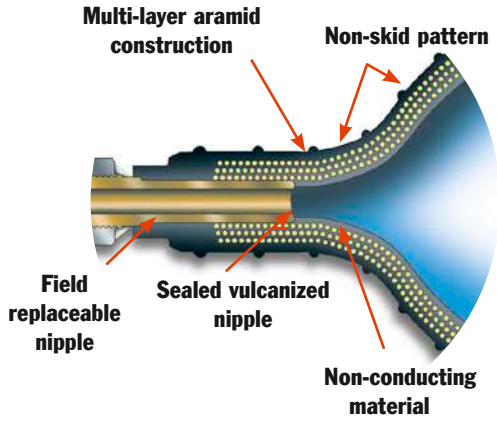


Stack up to two jacks together to increase effective lifting height.

PERFORMANCE



* **NOTE:** 350090 air controller may be used individually to control one jack (see single line system), or in multiples to control additional jacks (see dual line system).



No. 307159 – Pressure reducing valve. Allows use of bottled gases to operate jacks (works on CGA-580 Nitrogen/Argon/Helium bottles). Contains standard bottle fitting on inlet and 1/4" industrial interchange (female) outlet. Wt., 1.8 kg

No. 350090 – Air controller for single jack. Equipped with relief valve and pressure gauge. Wt., 0.9 kg

No. 350207 – Shut-off hose with shut-off valve and pressure relief valve. Includes a female and male quick coupler. Wt., 0.3kg

No. 350208 – Air hose. Red, 9m long. Includes No. 250341 female and No. 250342 male quick coupler. Wt., 2.7kg

No. 350209 – Air hose. Same as 350208, except blue in color. Wt., 2.7kg

No. 250343 – Female quick coupler. 1/4" industrial interchange x 1/8" NPT female. Wt., 0.05kg

No. 250353 – Male quick coupler. 1/4" industrial interchange x 1/8" NPT male. Wt., 0.05kg

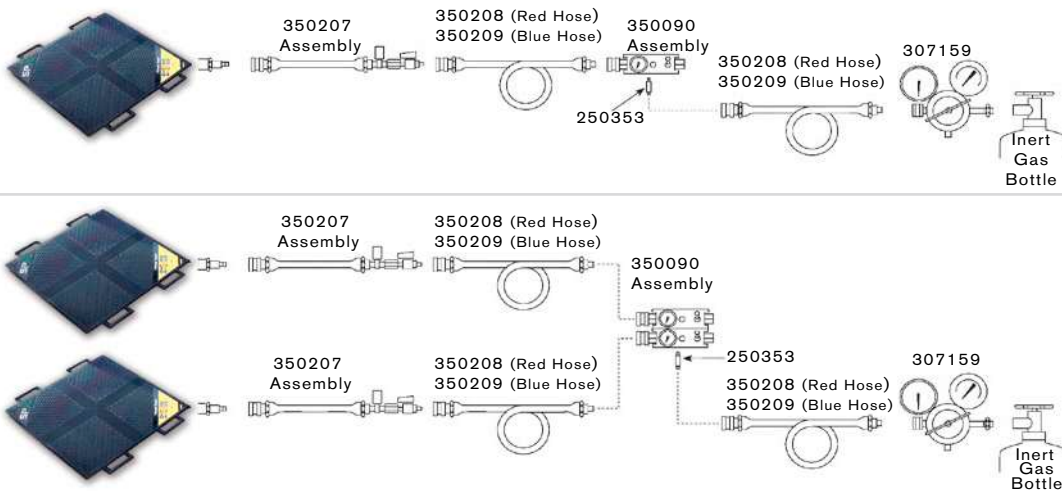
No. 250682 – Female quick coupler. 1/4" industrial interchange x 1/4" NPT male. Wt., 0.05kg

No. 15235 – Connector 1/8" NPT male x 1/4" NPT female. Wt., 0.05kg

No. 250341 – Female quick coupler. 1/4" industrial x 3/8" I.D. hose. Wt., 0.23kg

No. 250342 – Male Quick coupler. 3/8" I.D. Hose. Wt., 0.05kg

JACKS



ORDERING INFORMATION*

Lifting Cap. (Metric Tons)	Lifting Height (mm)	Order Number	Air Volume (liter)	Water Volume (liter)	Length (mm)	Width (mm)	Thickness (mm)	Product Weight (kg)
1,0	80	IJ 13T	3.3	0.7	150	150	22	0.6
3,3	130	IJ 45T	16.2	1.8	228	228	22	1.5
5,1	150	IJ 66T	22.5	2.5	270	270	22	2
10,2	215	IJ 119T	76.5	8.5	380	380	25	4
20,4	290	IJ 2211T	189	21	508	508	25	7
32,7	380	IJ 3615T	450	50	658	658	25	13
40,8	405	IJ 4516T	558	62	708	708	25	15
68,4	520	IJ 7520T	1,206	134	908	908	25	24

*See current price list for shipping weights.