



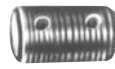
Accessories

C SERIES

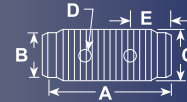
Mounting accessories

C Series

CYLINDERS



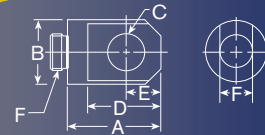
Threaded Connector



Cylinder Tons	Part No.	A (mm)	B (mm)	C (in)	D (mm)	E
5	25748	44,5	22,4	3/4-14 NSPM	4,8	12,7
10	25664	41,4	36,6	1 1/4-11 1/2 NSPM	7,9	14,2
25	25654	57,2	54,1	2-11 1/2 NSPM	9,7	16

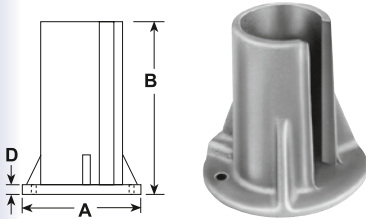


Piston Clevis



Cylinder Tons	Part No.	A (mm)	B (mm)	C (mm)	D (mm)	E (mm)	F (mm)
5**	350095	44,5	28,7	16	36,6	16	14,2
10 or 15**	350094	65	42,9	22,4	58,7	25,4	25,4
25**	420059	74,7	57,2	31,8	68,3	31,8	38,1

** Can be used with RD106, RD1010 Cylinder.

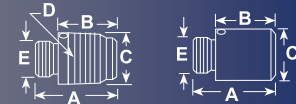


Support Base

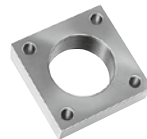
Cylinder	Order	A (mm)	B (mm)	C (mm)
10	420062	177,8	127	11,2
25	420063	177,8	127	11,2



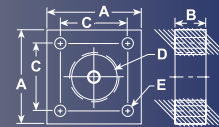
Threaded Adapter Plain Adapter



Cylinder Tons	Part No.	A (mm)	B (mm)	C (mm)	D (in)	E
5	202178 (threaded)	41,4	28,7	26,9	3/4-14 NPT	3/4-16UNF-2A
10 or 15	202179 (threaded)	46,0	26,9	41,4	1 1/4-11 1/2-NPT	1-8UNC-2A
25	202180 (threaded)	69,9	47,8	60,5	2-11 1/2-NPT	1 1/2-16UN-2A
10 or 15	350724 (plain)	50,8	31,8	37,6	-	1-8UNC-2A
25	350723 (plain)	54,1	31,8	57,2	-	1 1/2-16UN-2A

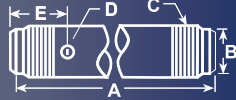


Cylinder Mounting Plate



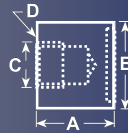
Cylinder Tons	Part No.	A (mm)	B (mm)	C (mm)	D (in)	E (mm)
5	350099	76,2	25,4	54,1	1 1/2-16UN-2B	8,6
10	350100	88,9	25,4	66,8	2 1/4-14UNS-2B	8,6
15	350184	88,9	25,4	66,8	2 3/4-16UN-2B	8,6
25	420064	127	50,8	93	3 3/16-12UN-2B	16,8

Extension Rod



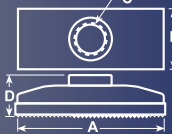
Cylinder Tons	Part No.	A (mm)	B (mm)	C (in)	D (mm)	E (mm)
5	350895	127	22,4	3/4-14 NPT	8,4	50,8
5	38908	254	22,4	3/4-14 NPT	8,4	50,8
5	350896	457,2	22,4	3/4-14 NPT	8,4	50,8
10	350897	127	36,6	1 1/4-11 1/2-NPT	8,4	50,8
10	38909	254	36,6	1 1/4-11 1/2-NPT	8,4	50,8
10	350898	457,2	36,6	1 1/4-11 1/2-NPT	8,4	50,8

Cylinder Base Attachment



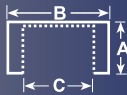
Cylinder Tons	Part No.	A (mm)	B (mm)	C (in)	D (mm/in)
5†	208380	41,4	44,5	3/4-14NPSM	7,1Dia.(No.2) 1/4-20 UNC x3/4" Lg.Socket Head Cap Screws
10†	208381	47,8	63,5	1 1/4-11 1/2-NPSM	8,6 Dia.(No.2) 5/16-18 UNC x1" Lg. Socket Head Cap Screws
25†	208382	60,5	98,6	2-11 1/2-NPSM	13,5 Dia. (No.2) 1/2-13 UNC x 1" Lg. Socket Head Cap Screws

Cylinder Flat Base



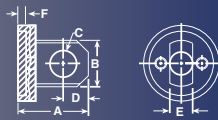
Cylinder Tons	Part No.	A (mm)	B (mm)	C (in)	D (mm)
5	25750*	114,3	63,5	3/4-14-NPSM	34
10	32325*	166,6	88,9	1 1/4-11 1/2-NPSM	36,6

Smooth Saddle Serrated Saddle

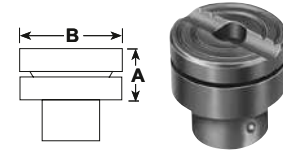


Cylinder Tons	Part No.	A (mm)	B (mm)	C (in)
5	25746* (serrated)	28,7	33,3	3/4-14NPSM
10 or 15	31772* (serrated)	28,7	50,8	1 1/4-11 1/2-NPSM
25	31776* (serrated)	33,3	76,2	2-11 1/2-NPSM
5	351575* (plain)	28,7	33,3	3/4-14-NPSM
10	24016* (plain)	28,7	50,8	1 1/4-11 1/2-NPSM
25	351576* (plain)	33,3	76,2	2-11 1/2-NPSM

Body Clevis†

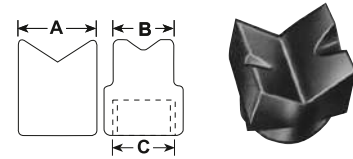


Cylinder Tons	Part No.	A (mm)	B (mm)	C (mm)	D (mm)	E (mm)	F (mm)
5	350096	52,3	28,7	16	16	14,2	6,4
10	350097	76,2	42,9	22,4	25,4	25,4	6,4
15	350098	77,7	42,9	22,4	25,4	25,4	6,4
25	420061	90,4	57,2	31,8	31,8	38,1	6,4

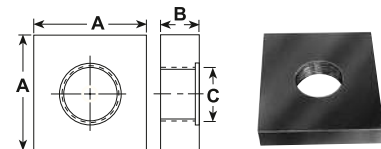


Swivel Cap

Cylinder Tons	Part No.	A (mm)	B (mm)
10 or 15	350144	22,4	36,5
25	350145	28,7	54
55 or 75	350376	31,8	71,4
100	351574	48,5	88,1



Cylinder Tons	Part No.	A (mm)	B (mm)	C (in)
5	25388*	35,1	26,9	3/4-14-NPSM
10	25395*	54,1	54,1	1 1/4-11 1/2-NPSM



Plunger Base

Cylinder Tons	Part No.	A (mm)	B (mm)	C (in)
25	25652	152,4	31,8	2-11 1/2-NPSM

* Items require threaded adapter (Page 36) when used with "C" series cylinders. They may be used on threaded "CBT" cylinders without the use of an adapter.

† Mounting screws are included.